

The BMW X6

[www.bmw.co.uk](http://www.bmw.co.uk)  
[www.bmw.ie](http://www.bmw.ie)



The Ultimate  
Driving Machine



# THE BMW X6.

**BMW EFFICIENT DYNAMICS.**  
LESS EMISSIONS. MORE DRIVING PLEASURE.



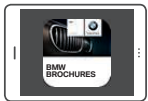
BMW stands for sheer driving pleasure and the joy of driving a BMW is a uniquely individual experience. Discover countless personal stories at [www.bmw.com/BMWstories](http://www.bmw.com/BMWstories)

## GET MORE FROM YOUR BROCHURE.

Films, image galleries and much more – discover exciting digital content on every page with a QR code.

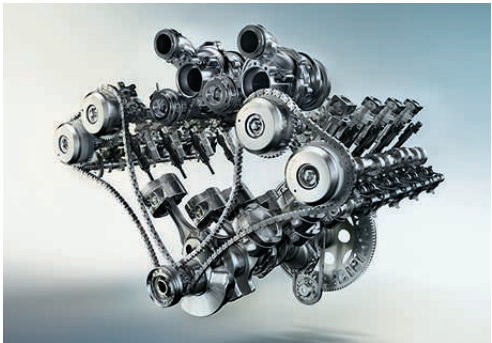


All you need is a QR code reader, which you can simply choose and download from the App Store. Start the reader and hold your smartphone or tablet about 20cm from the code.



You can also discover the BMW X6 in a digital brochure. Simply download it directly to your tablet from the BMW brochure app, which can be found in the App Store.

Internet use, depending on your mobile contract, may incur costs.



**THE BMW X6.**  
**LIMITLESS. POWERFUL. AGILE.**

## THE MODEL SHOWN.

- 04 BMW X6 xDRIVE50i WITH PURE EXTRAVAGANCE DESIGN PACKAGE:** BMW TwinPower Turbo V8 petrol engine, 449hp (330kW), 20" light alloy V-spoke style 597 with mixed tyres, exterior in Sparkling Storm xirallic paint, Adaptive LED Headlights, Ivory White/Black Bi-colour Exclusive Nappa leather upholstery with Grey contrast stitching, American Oak, High-gloss interior trim.

## INNOVATION AND TECHNOLOGY.

- 18 BMW TWIN POWER TURBO ENGINES:** At the heart of BMW EfficientDynamics.
- 20 BMW EFFICIENT DYNAMICS:** Making light work of lower fuel consumption.
- 22 BMW CONNECTED DRIVE:** In touch with your world.
- 24 SUSPENSION:** Innovative systems for more driving pleasure.
- 25 SAFETY:** Technology at the highest level.

## INDIVIDUALITY AND CHOICE.

- 28 EQUIPMENT:** SE, Pure Extravagance Design package, M Sport and M50d, BMW Individual, Equipment highlights, Wheels and tyres, Genuine BMW Accessories.
- 44 COLOURS:** Exterior and interior colours.
- 48 TECHNICAL DATA:** Facts, figures and dimensions.
- 50 BMW SERVICE:** BMW Service, BMW Financial Services and BMW Experience.



# BREAKS

## ALL RULES AND CONVENTIONS AND HEARTS.

A way of life: the BMW X6. The striking Sports Activity Coupé from BMW confidently rules the road and is destined to stand out everywhere it goes. Its unique concept – a blend of the very best of an athletic coupé coupled with the powerful dynamism of a BMW – breaks all existing conventions, instantly propelling this exceptional vehicle to its rightful position as the king of the road.

DISCOVER  
THE BMW X6.







**EXCEPTIONAL**  
BY NATURE.





The mark of a true athlete: The rear of the BMW X6 makes no secret of its powerful X pedigree. Horizontal contours highlight its broad stance, making the quintessential L-shaped rear lights with LED technology appear even more tantalising.





## **BEND** THE LAWS OF PHYSICS.

At the heart of the action: Thanks to its superior handling and dynamic driving characteristics, in the BMW X6 you'll always be ahead. The powerful V8 petrol engine with BMW TwinPower Turbo technology and eight-speed Sport transmission with Steptronic means that the BMW xDrive50i accelerates from 0 to 62mph in an astounding 4.8 seconds.

The BMW S 1000 R is just as dynamic when it commands its space on the road: With 160hp (118kW) and a maximum torque of 112Nm at 9,250rpm, this roadster is poised to meet any challenge. The uncompromising design and highly advanced technology also ensure that the BMW S 1000 R is always in the lead.







MARK THE SPOT  
**WITH AN X.**

Your seat awaits you: The interior of the BMW X6 was designed with the driver in mind. Thanks to the vehicle's elevated seating position, you are guaranteed a superior overview of your surrounds. Expertly crafted materials create an exclusive interior atmosphere, while the elegant contours that sweep from the cockpit to the rear express the coupé-style personality of the BMW X6.





Wherever life may take you, the BMW X6 will bring you to your destination. The design is extravagant and the driving dynamics are thrilling to the extreme. What makes it different is what makes it so irresistible. Discover it for yourself: the BMW X6.

IT WILL SUIT YOU  
**TO A TEE.**





## INNOVATION AND TECHNOLOGY.

**BMW TWIN POWER TURBO ENGINES:** At the heart of BMW EfficientDynamics.

**BMW EFFICIENT DYNAMICS:** Making light work of lower fuel consumption.

**BMW CONNECTED DRIVE:** In touch with your world.

**SUSPENSION:** Innovative systems for more driving pleasure.

**SAFETY:** Technology at the highest level.



# BMW TwinPower Turbo engines.

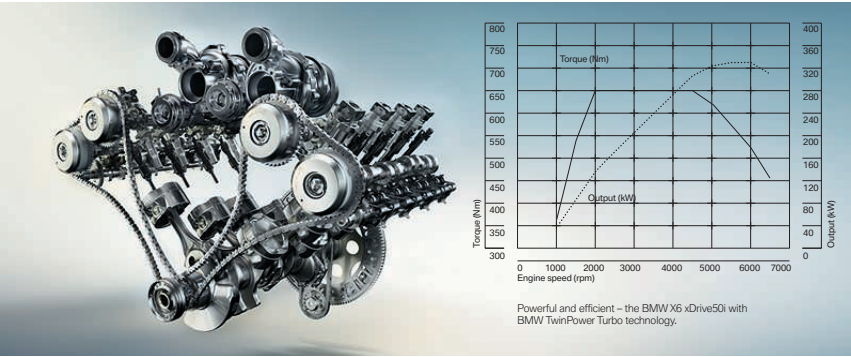
## At the heart of BMW EfficientDynamics.

Thanks to BMW TwinPower Turbo technology, the innovative new generation of BMW petrol and diesel engines from the BMW EfficientDynamics engine range guarantee even more thrilling power delivery and excellent responsiveness even at low engine speeds, while also keeping fuel consumption and emissions to a minimum. Increased efficiency and optimal dynamics make driving a BMW more enjoyable than ever.



### BMW TWIN POWER TURBO V8 PETROL ENGINE.

The powerful BMW TwinPower Turbo V8 petrol engine in the BMW X6 xDrive50i combines two turbochargers with Double-VANOS. It is also extremely fuel efficient, thanks to High-precision direct injection. With an output of 449hp (330kW), it can accelerate from 0 to 62mph in an incredible 4.8 seconds. The result is a massive maximum torque of 650Nm at engine speeds between 2000–4500rpm.



### BMW X6 xDrive50i.

- BMW TwinPower Turbo V8 petrol engine with 449hp (330kW) and 650Nm of torque
- Acceleration 0–62mph: 4.8 seconds
- Top speed: 155mph (250km/h)
- Combined fuel consumption: 29.1mpg (9.7l/100km)
- CO<sub>2</sub> emissions: 225–227g/km

### BMW X6 xDrive30d.

- BMW TwinPower Turbo six-cylinder in-line diesel engine with 258hp (190kW) and 560Nm of torque
- Acceleration 0–62mph: 6.7 seconds
- Top speed: 143mph (230km/h)
- Combined fuel consumption: 47.1mpg (6.0l/100km)
- CO<sub>2</sub> emissions: 157–159g/km

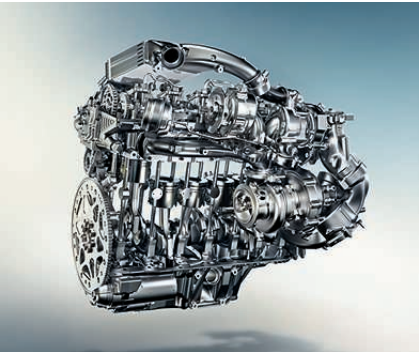
### BMW X6 xDrive40d.

- BMW TwinPower Turbo six-cylinder in-line diesel engine with 313hp (230kW) and 630Nm of torque
- Acceleration 0–62mph: 5.8 seconds
- Top speed: 149mph (240km/h)
- Combined fuel consumption: 44.8–45.6mpg (6.2–6.3l/100km)
- CO<sub>2</sub> emissions: 163–165g/km

### BMW X6 M50d.

This M Performance TwinPower Turbo six-cylinder in-line diesel engine combines Common-rail direct injection and a unique three-stage turbocharger with Variable Vane Geometry. **More information can be found on pages 34/35.**

- BMW TwinPower Turbo six-cylinder in-line diesel engine with 381hp (280kW) and 740Nm of torque
- Acceleration 0–62mph: 5.2 seconds
- Top speed: 155mph (250km/h)
- Combined fuel consumption: 42.8mpg (6.6l/100km)
- CO<sub>2</sub> emissions: 174g/km

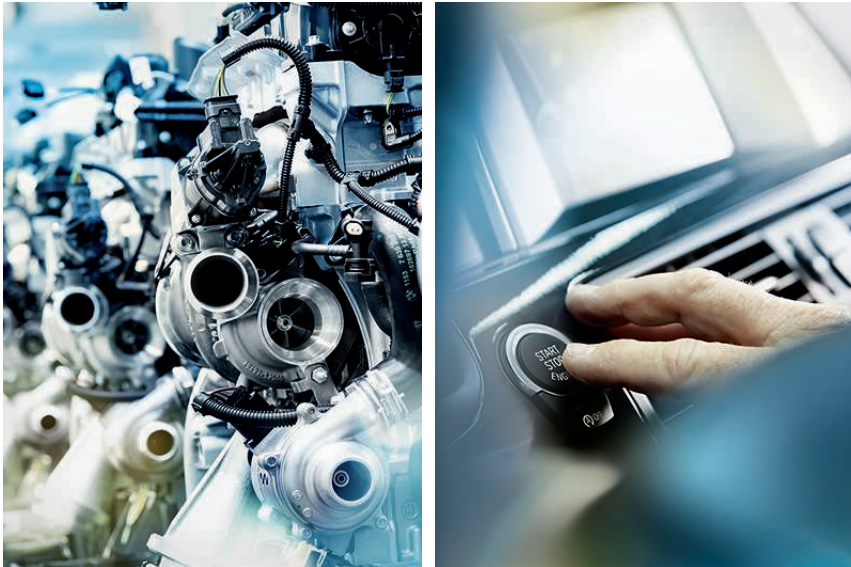




# BMW EfficientDynamics

Making light work of lower fuel consumption.

BMW EfficientDynamics is the BMW Group strategy that comprises all measures aimed at improving efficiency while simultaneously enhancing dynamics in every BMW vehicle. Since 1995, it has led to a 30% reduction in CO<sub>2</sub> output across the European new-vehicle fleet, a figure that will fall by a further 25% by the summer of 2020.



## SPORTY AND EFFICIENT: EIGHT-SPEED SPORT AUTOMATIC TRANSMISSION WITH STEPTRONIC.

The **eight-speed Sport automatic transmission with Steptronic** adapts to suit your individual driving style. It is perfect for comfortable cruising or highly dynamic driving. In addition to automatic gear selection, it is of course possible to shift gears manually at any time. You can change gears by using the dynamically designed gear lever or the gearshift paddles on the steering wheel.



## OVERALL CONCEPT.

BMW has been utilising **intelligent lightweight construction** since the 1930s. Exceptionally lightweight materials are used for individual, carefully selected parts – for example, aluminium in the suspension system and at the front of the car and magnesium in the dashboard mount. This reduces the weight of the car and fuel consumption while complying with the strictest safety standards and maximising performance.

## DRIVE TRAIN.

**BMW TwinPower Turbo petrol engines** feature remarkably agile power delivery and excellent responsiveness, even at low engine speeds. At the same time they are more efficient, with lower emissions and better performance than their predecessors.

**BMW TwinPower Turbo diesel engines** are notable for their outstanding responsiveness and agile power delivery at any engine speed. At the same time, they are highly efficient, featuring low emissions and great dynamics.

## ENERGY MANAGEMENT.

**ECO PRO mode.** This mode enables fuel consumption to be reduced by up to 20% depending on your individual driving style. For example, ECO PRO will advise the driver to accelerate less aggressively, the eight-speed Sport automatic transmission shifts even faster to higher gears and the automatic air conditioning is subject to energy optimised settings.

**Auto Start-Stop.** Automatically switches off the engine when the vehicle is stationary. As soon as you take your foot off the brake, the engine immediately starts up again and your journey continues. And without any effort on your part, you've saved fuel and helped protect the environment.

**Brake Energy Regeneration.** Now when you brake, you won't just be slowing yourself down, you'll be helping to keep your car moving. It sounds counter-intuitive, but whenever you apply the brakes or take your foot off the accelerator, you recycle energy instead of wasting it. Brake Energy Regeneration then uses this energy to recharge the battery. In the process, it reduces the demand on your engine, means you consume less fuel and keeps down your CO<sub>2</sub> emissions.



# BMW ConnectedDrive

In touch with your world.

Our world is becoming more connected every day with instant access to information at anytime and anyplace. With your BMW being an integral part of your lifestyle we believe it's important that you can keep up to date from behind the wheel. BMW ConnectedDrive delivers intelligent solutions that allow you to remain connected whilst on the move.



Advanced driver assistance systems can connect you to the outside world so that you know exactly what is happening around you, premium traffic solutions ensure you are taking the most time efficient route whilst online services provide direct access to information about your current location or chosen destination. Today, driving enjoyment is derived as much from being informed and relaxed as it is from impressive performance and efficiency – discover how the comprehensive range of ConnectedDrive technologies can enhance the connected capabilities of your Ultimate Driving Machine.

For more information please visit:

- [www.bmw.co.uk/connecteddrive](http://www.bmw.co.uk/connecteddrive)
- [www.bmw.ie/connecteddrive](http://www.bmw.ie/connecteddrive)

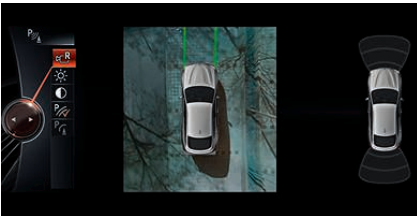
Wherever your journey may lead, you can stay in touch with **BMW ConnectedDrive Services**. The range of innovative functions provide optimum integration between the driver, vehicle and the world outside – anytime, anywhere. The comprehensive range of advanced driver assistance systems seamlessly integrate the driver into their immediate environment. Headlights, sensors, cameras and radars can combine to ensure the driver is fully informed about what is happening around them, delivering superior comfort and convenience as well as enhanced safety for both passengers and other road users.



**Head-up Display.** The optional full colour Head-up Display projects important driving information directly into the driver's field of vision. The information displayed can be customised in the vehicle settings and includes the current speed of travel, navigation instructions or telephone and music listings. This convenient display ensures that your eyes are always on the road ahead for a safer driving experience.



**Intelligent Headlights.** A tailored combination of advanced headlight technologies combine to ensure optimum illumination of the road ahead without glaring on-coming traffic or other road users. The independent beam distribution of Adaptive Headlights combine with High-beam Assistant. The intelligent system monitors the road ahead and controls the beam distribution of the headlights to improve visibility during night time and poor weather driving conditions. Xenon Headlights include bi-xenon and LED technology to enhance the visual styling appeal in all conditions.



**Surround-view.** Optional Surround-view offers the driver a bird's-eye-view of the area around the vehicle, clearly shown in the Control Display, providing extra confidence in tight manoeuvres and when parking.



# Suspension.

Innovative systems for more driving pleasure.



**xDrive**, the intelligent BMW four-wheel-drive system, adapts outstandingly to even the most challenging road surface conditions, always offering ample traction. With xDrive and Dynamic Stability Control (DSC) as standard, your car remains directionally stable and controllable. xDrive flexibly distributes drive power to the front and rear wheels, performing lightning-fast adjustments to ensure optimum ground contact at all times. This allows xDrive to combine the advantages of a four-wheel-drive – traction, directional stability and safety – with typical BMW agility.

**Adaptive Comfort suspension** (optional) combines Variable Damper Control with self-levelling air suspension on the rear axle for the ultimate in driving comfort. Whenever you want more athletic suspension settings, you can use the Drive Performance Control button to activate one of the two more dynamic modes.

**Adaptive Dynamic suspension** (optional) allows drivers to optimise the vehicle’s full dynamic potential. Encompassing both Dynamic Performance Control and Dynamic Drive, Adaptive Dynamic suspension is guaranteed to deliver driving dynamics that are intrinsically sporty, while maintaining superior driving comfort. Dynamic Performance Control optimises traction, directional stability and agility by distributing drive power to the outer rear wheel when driving through bends.

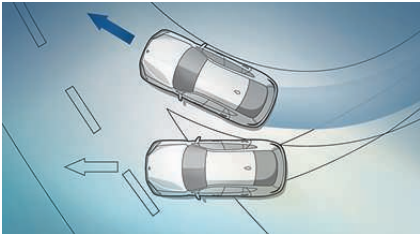
**Professional Adaptive Suspension package** (optional) combines the components of both the Adaptive Comfort suspension and Adaptive Dynamic suspension options, thereby providing the ultimate in driving comfort while maximising the driving dynamics. You can adjust your vehicle’s suspension settings to suit your individual driving style at any time using the Drive Performance Control button.

**Adaptive M suspension** (standard for M Sport models) includes Variable Damper Control and self-levelling air suspension on the rear axle. Its dynamic basic configuration can be changed using the Drive Performance Control button, with Sport and Sport+ modes for an even sportier setting.

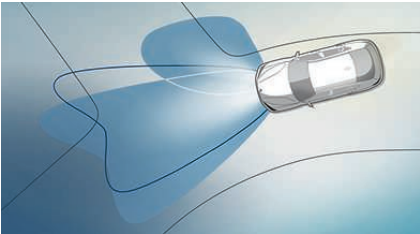
**Active Steering** (optional) varies the steering angle of the wheels, depending on the vehicle’s speed. Thanks to a greater steering angle, the steering wheel only needs to be turned slightly when driving at lower speeds, resulting in improved manoeuvrability.

# Safety.

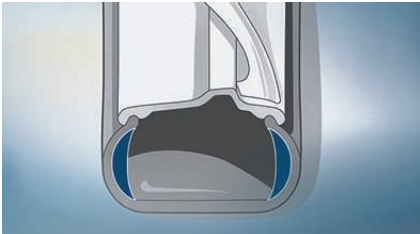
Technology at the highest level.



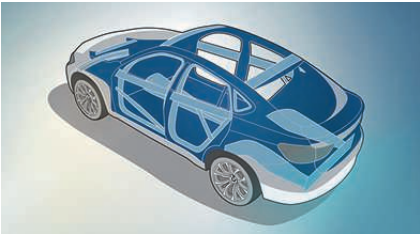
■ **Dynamic Stability Control Plus (DSC+)** constantly assesses the vehicle’s movements and optimises directional stability and traction.



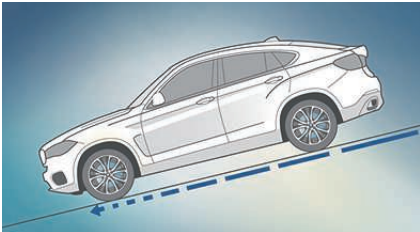
□ **Adaptive Headlights** with variable light distribution, including cornering lights for optimal illumination of the road ahead and BMW Selective Beam (available with High-beam Assistant).



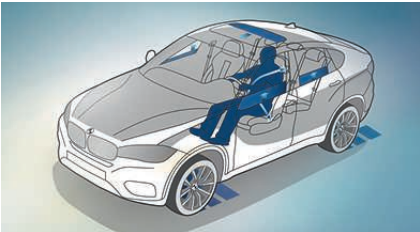
■ **Tyre pressure monitoring** measures the air pressure and temperature via a sensor, and notifies the driver of pressure loss.



■ **Passenger cell** optimises passive safety in the event of a crash with its specialised system of beams and nodal connections as well as high-strength materials.



■ **Hill Descent Control (HDC)**. When activated, this system ensures that the vehicle can negotiate the steepest downhill runs automatically and safely at just above walking pace, without the driver having to brake.



□ **Dynamic Safety** is a preventive passenger protection system developed by BMW. It triggers precautionary measures in potentially dangerous situations and brakes the vehicle after an accident has occurred. Includes Attentiveness Assistant.





# INDIVIDUALITY AND CHOICE.

**EQUIPMENT:** SE, Pure Extravagance Design package, M Sport and M50d, BMW Individual, Equipment highlights, Wheels and tyres, Genuine BMW Accessories.

**COLOURS:** Exterior and interior colours.

**TECHNICAL DATA:** Facts, figures and dimensions.

**BMW SERVICE:** BMW Service, BMW Financial Services and BMW Experience.





SE.

■ Standard equipment    □ Optional equipment



[ 01 | 03 ] The BMW X6 xDrive30d SE in optional Glacier Silver metallic paint with optional 19" Y-spoke style 595 light alloy wheels (standard for BMW X6 xDrive50i SE).

[ 02 ] The standard BMW Professional Navigation system with BMW Professional radio and standard loudspeaker system with six loudspeakers provide entertainment for every journey.



[ 04 ] Optional Sport seats with standard Dakota leather upholstery in Coral Red highlight the dynamic interior.



[ 05 ] 19" Y-spoke style 594 light alloy wheels (standard with BMW X6 xDrive30d and BMW X6 xDrive40d).



# PURE EXTRAVAGANCE DESIGN PACKAGES.

■ Standard equipment    □ Optional equipment

### Interior equipment features (Ivory White):

- Bi-colour Exclusive Nappa leather upholstery in Ivory White/Black
- Door upper-arm trim panels, Black Nappa leather with Grey contrast stitching
- Instrument panel, top, Black Nappa leather with Grey contrast stitching
- Interior trim, American Oak, High-gloss
- Remote control with Pearl Grey Chrome buttons

### Interior equipment features (Cognac):

- Bi-colour Exclusive Nappa leather upholstery in Cognac/Black
- Door upper-arm trim panels, Black Nappa leather with Brown contrast stitching
- Instrument panel, top, Black Nappa leather with Brown contrast stitching
- Interior trim, Fineline Stripe, High-gloss
- Remote control with Pearl Grey Chrome buttons

### Optional equipment:

- Choice of alternative interior trims

### Exterior equipment features:

- 20" light alloy V-spoke style 597 with mixed run-flat tyres
- In Black, High-gloss:
  - Finishers, B and C pillars
  - Mirror triangles
- In Cerium Grey:
  - Air breather
  - Exterior mirror caps
  - Exterior trim
  - Front kidney grille and air intakes
  - Illuminated Aluminium door entry sills, front
  - Running boards, Aluminium finished in Cerium Grey
  - Stainless steel front and rear bumper inserts
  - Tailgate trim finisher
- Remote control with Pearl Grey Chrome buttons

### Optional equipment:

- Choice of alternative 20" light alloy wheels

03 □



01 ■



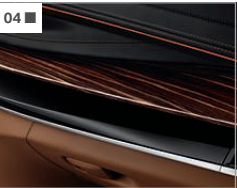
[ 01 ] The Exclusive Nappa leather upholstery radiates superior elegance in Bi-colour Cognac/Black with Grey contrast stitching.

02 ■



[ 02 ] Dynamics with an exclusive ambience – the driver-oriented interior and standard Sport leather steering wheel with integrated gearshift paddles ensure you'll always enjoy a sporty ride.

04 ■



05 ■



[ 03 | 06 ] The BMW X6 in optional Sophisto Grey Xirallic paint and featuring optional 20" light alloy Star-spoke style 491 with mixed run-flat tyres in Black, High-gloss.

06 □



07 ■



08 ■



[ 07 ] The Aluminium running boards in Cerium Grey add a distinctive look and make getting into the car easier.

[ 04 ] The lower part of the instrument panel in Cognac with Fineline Stripe, High-gloss interior trim complement the premium leather upholstery.

[ 08 ] 20" V-spoke style 597 light alloy wheels, with mixed run-flat tyres.

[ 05 ] The Air Breather channels air to the front wheels, thus reducing air resistance, fuel consumption and CO<sub>2</sub> emissions.



# M SPORT.

■ Standard equipment    □ Optional equipment

Interior equipment features:

- Adaptive M suspension
- Door sill finishers with M designation
- Headlining, Anthracite
- Interior trim, Aluminium Hexagon
- Interior trim, Poplar wood, High-gloss (xDrive50i M Sport)
- M leather steering wheel with gearshift paddles
- Remote control, including integrated key, with M designation
- Seat adjustment - front, electric with driver memory
- Sport seats, front

Exterior equipment features:

- 20" M Double-spoke style 469 M light alloy with run-flat tyres
- Air Breather with Black, High-gloss finisher
- Exhaust tailpipes - single, left and right, Chrome, quadrilateral
- Exterior trim, High-gloss Shadowline
- M aerodynamic bodystyling
- M designation on front side panels, left and right



[ 01 ] The M leather steering wheel offers great grip and makes driving easier thanks to multi-function buttons and integrated gearshift paddles.



[ 02 ] Electronically adjustable Sport seats with memory function and optional Black Alcantara/Dakota leather upholstery offer the driver and front passenger optimum lateral support.

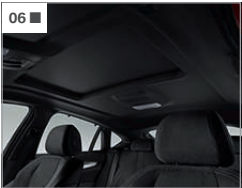
03 □



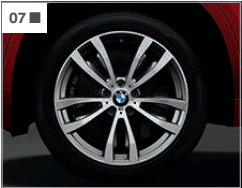
[ 03 | 05 ] The BMW X6 in optional Flamenco Red Xirallic paint.



[ 04 ] As soon as the door is opened, the door sill finishers with M designation hint at the excitement to come behind the wheel.



[ 06 ] Anthracite headlining lends the interior an exclusive atmosphere.



[ 07 ] 20" M Double-spoke style 469 M light alloy wheels, with mixed run-flat tyres.



# THE BMW X6 M50d. M GENE INCLUDED.

**BMW X6 M50d.** The BMW X6 M50d combines an innovative drive train, perfectly aligned suspension technology and a unique design to create a vehicle destined to delight with its blend of unadulterated dynamism, comfort and everyday practicality. The M Performance TwinPower Turbo six-cylinder in-line diesel engine with a three-stage turbocharger and Common-rail direct injection delivers an impressive performance coupled with lightning-fast responsiveness and lasting thrust power. With its 381hp (280kW) engine, the BMW X6 M50d takes just 5.2 seconds to accelerate from 0 to 62mph and has an efficient combined fuel consumption rate of 42.8mpg (6.6l/100km) and CO<sub>2</sub> emissions of 174g/km. Adaptive M suspension and Variable Damper Control simultaneously ensure that the BMW X6 M50d takes sportiness to a whole new level – allowing you to experience outstandingly precise handling and the ultimate in agility.

powered by 



Striking M50d designation in Dark Chrome.



Quadrilateral exhaust tailpipes, left and right, with Black Chrome finisher.





# BMW Individual

The expression of personality.



BMW Individual Pyrite Brown metallic paint and 20" light alloy V-spoke style 551 I.



### The BMW X6. Inspired by BMW Individual.

Driving a BMW is, in itself, a mark of character. There are those who still, however, want their vehicles to be even more individual reflections of their personality. The BMW Individual Collection and the BMW Individual Manufaktur meet these needs by opening up seemingly limitless opportunities for differentiation.

Precisely in tune with each model, the BMW Individual Collection offers a highly exclusive selection of equipment options and fascinating exterior paint which refracts the light. Leather, unique in colour and scope of application, perfected with clever contrasts and decorative stitching. Interior trims in the most exclusive fine woods, the immaculate Piano Black and the finest leather.

And yet even this can be surpassed – thanks to the BMW Individual Manufaktur. Here, there is only one goal: realising almost any request, even the most personal, with stylish, hand-crafted perfection.



BMW Individual Extended Merino leather in Taupe with decorative perforation, piping and contrast stitching.



BMW Individual Extended Merino leather in Taupe with BMW Individual Instrument panel, leather, BMW Individual Light Sen wood, High-gloss interior trim and BMW Individual leather steering wheel with wood inlay.



EXPERIENCE BMW INDIVIDUAL INTERACTIVE  
WITH THE BMW INDIVIDUAL IPAD APP.

DISCOVER MORE  
BMW INDIVIDUAL EQUIPMENT ONLINE.





# EQUIPMENT HIGHLIGHTS.

■ Standard equipment    □ Optional equipment



[ 01 ] The electric glass sunroof creates a pleasant climate. The integrated wind deflector guarantees a high level of acoustic comfort.

[ 02 ] Towbar, fully electric, can be electronically folded away under the rear apron and can support a trailer load of up to 3.5 tonnes.

[ 03 ] Running boards, Aluminium shown here finished in Cerium Grey (available with Pure Extravagance Exterior Design package) for easier access and also add a distinctive look.



[ 04 ] The M leather steering wheel offers a firm grip and exceptional convenience thanks to multi-function buttons and gearshift paddles. (Standard for M Sport and M50d).

[ 05 ] Adaptive LED Headlights produce light which is similar to daylight. The light distribution is automatically adjusted depending on the vehicle's steering angle and speed.

[ 06 ] Soft-close doors – an electric motor pulls the door securely and quietly closed.



[ 07 ] Sport leather steering wheel with gearshift paddles allows the driver to conveniently steer, change gear and other functions keeping their hands on the wheel (standard for SE).

[ 08 ] Roof rails, shown here in Black, High-gloss, match harmoniously to the car's design and provide the foundation for a BMW multi-functional roof rack system available from BMW Genuine Accessories.

[ 09 ] BMW Individual leather steering wheel with wood inlay complements each BMW Individual interior trim.



[ 10 ] BMW Individual Instrument panel, leather. The top is finished in Nappa leather while the bottom is in Merino leather to match chosen upholstery colour.<sup>1</sup>

[ 11 ] Driving Assistant Plus, including Active Cruise Control (ACC) with Stop&Go function, provides the most modern warning and collision protection functions available and supports the driver in dangerous or monotonous traffic situations.

[ 12 ] Multi-functional Instrument panel provides an impressive visualisation of the gauges with a high-resolution 10.25" display using Black panel technology.

[ 13 ] Head-up Display projects all information relevant to the journey directly into the driver's field of vision.<sup>2</sup>



[ 14 ] Drive Performance Control lets the driver choose between standard Comfort mode, ECO PRO mode, which is geared towards efficiency, and Sport mode.

[ 15 ] The iDrive Touch Controller allows intuitive control via the iDrive Controller touchpad.

[ 16 ] Cup holders in front of the gear lever, along with storage for other objects.



[ 17 ] Ceramic finish for controls, such as the gear lever and temperature and volume dials, give an especially high-quality appearance.

[ 18 ] B&O Advanced audio system enthralls listeners with full sound and 16 loudspeakers with extendable centre speaker.

[ 19 ] Automatic air conditioning with four-zone control comes with an additional control unit for individual temperature control in the rear.

<sup>1</sup> The top is in Black with Amaro Brown, Nutmeg or Crollio Brown upholstery and in Dark Scotch with Smoke White or Taupe upholstery. The upper and lower parts of the instrument panel and the door panels feature contrast stitching. Only available in conjunction with corresponding BMW Individual Merino leather upholstery.  
<sup>2</sup> Additional options may be required to display all information shown.



EQUIPMENT HIGHLIGHTS.

■ Standard equipment    □ Optional equipment



[ 01 ] Surround-view is a visual parking aid that includes the 360° camera systems, Top-view and Side-view.

[ 02 ] Park Assist provides the driver with maximum support when parallel parking – by taking charge of selecting the correct gear, as well as steering, acceleration and braking.

[ 03 ] Rear-seat entertainment - BMW Professional with remote-control offers the best entertainment options for passengers sitting in the rear thanks to two 9.2" colour displays.

[ 04 ] Enhanced Bluetooth telephone preparation with USB audio interface, Voice Control and Bluetooth audio streaming.<sup>1</sup>

[ 05 ] Navigation system - BMW Professional Multimedia, shown here with Real Time Traffic Information (RTTI) which delivers traffic information about motorways, country roads and main roads, as well as numerous urban routes.

[ 06 ] Night Vision with Dynamic Light Spot makes it easy to identify people and large animals at night – even at a significant distance.

[ 07 ] Speed limit display including no-overtaking indicator provides information on speed limits as well as no-overtaking zones.

[ 08 ] When driving off-road, xDrive Status offers an overview of information such as the cross slope and angle of incline, as well as a compass.

[ 09 ] Seat ventilation, front, in warmer weather this option ensures a cool and pleasant seat temperature for a more comfortable driving experience.

[ 10 ] BMW Individual Cool box. Its 13 litre volume accommodates two 0.7 litre bottles and two cans. Easily removable, allowing full luggage compartment capacity when needed.<sup>2</sup>

[ 11 ] Comfort Access for keyless locking, unlocking and ignition provided the remote key is on your person. Includes smart-opener for contactless opening and closing of the tailgate.<sup>3</sup>

[ 12 ] Sport seats for the driver and front passenger provide optimal support, along with numerous electrical adjustment options. (Standard for M Sport and M50d models).

[ 13 ] Extended storage includes a number of clever solutions that allow large and small objects, as well as luggage, to be secured and stowed.

[ 14 ] The 5 seats, which include two visually contoured individual rear seats, lend the car a dynamic coupé-style character (shown here in optional Bi-colour Exclusive Nappa leather).

[ 15 ] Through-loading ski bag ensures there is still room in the rear for up to two passengers.

[ 16 ] Knee pads on the centre console for both the driver and front passenger provide comfortable lateral support for legs – especially when driving round bends.

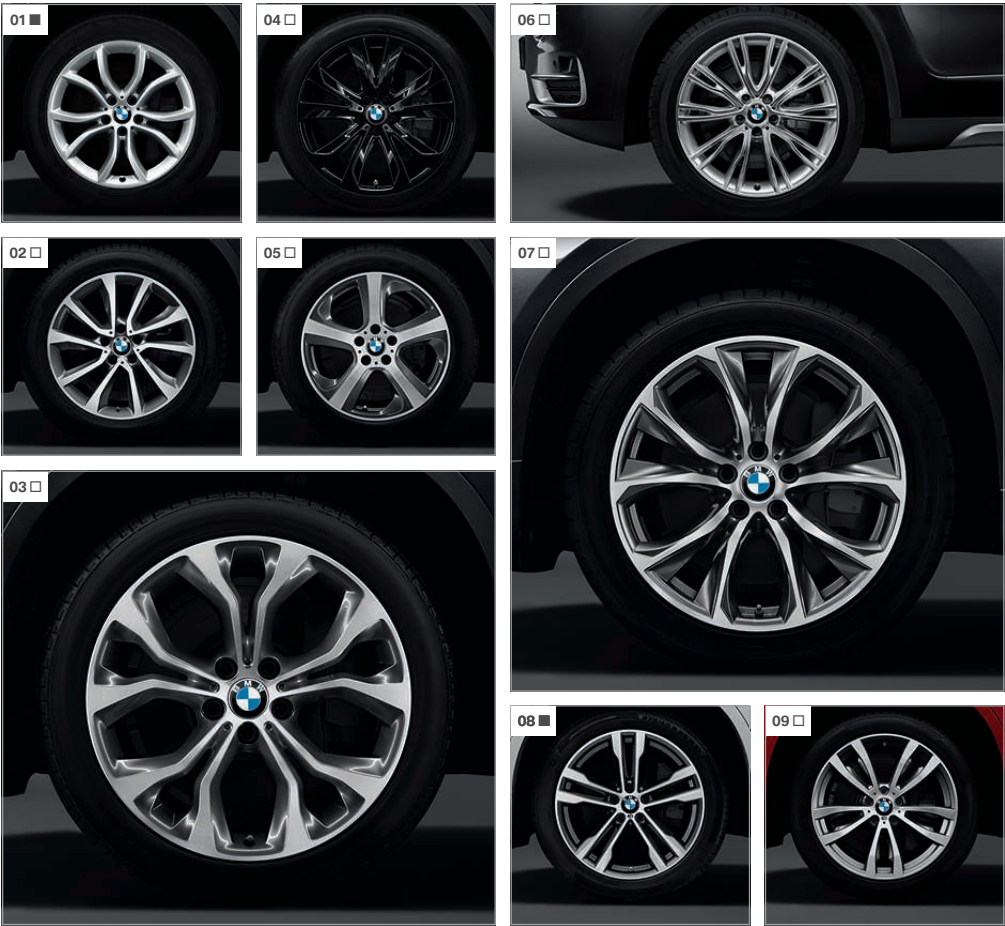
[ 17 ] Ambient interior lighting with colour selection includes additional light sources positioned throughout the interior for a particularly pleasant atmosphere.

<sup>1</sup> More information on the Bluetooth compatibility of smartphones and other mobile devices is available at [www.bmw.com/bluetooth](http://www.bmw.com/bluetooth)  
<sup>2</sup> When integrated into the luggage compartment, the luggage compartment capacity decreases by approx. 80 litres.  
<sup>3</sup> Contactless opening and closing of the tailgate is not available in conjunction with Pure Extravagance Exterior Design package.



WHEELS AND TYRES.

■ Standard equipment    □ Optional equipment



- [ 01 ]** 19" Y-spoke style 594 light alloy wheels, 9J x 19 with 255/50 R19 run-flat tyres (standard with BMW X6 xDrive30d/40d SE models).

**[ 02 ]** 19" Y-spoke style 595 light alloy wheels, 9J x 19 with 255/50 R19 run-flat tyres (standard with BMW X6 xDrive50i SE).

**[ 03 ]** 20" Y-spoke style 451 light alloy wheels, with mixed run-flat tyres, front 10J x 20 with 275/40 R20 tyres, rear 11J x 20 with 315/35 R20 tyres.
- [ 04 ]** 20" Star-spoke style 491 Black alloy wheels, with mixed run-flat tyres, front 10J x 20 with 275/40 R20 tyres, rear 11J x 20 with 315/35 R20 tyres.

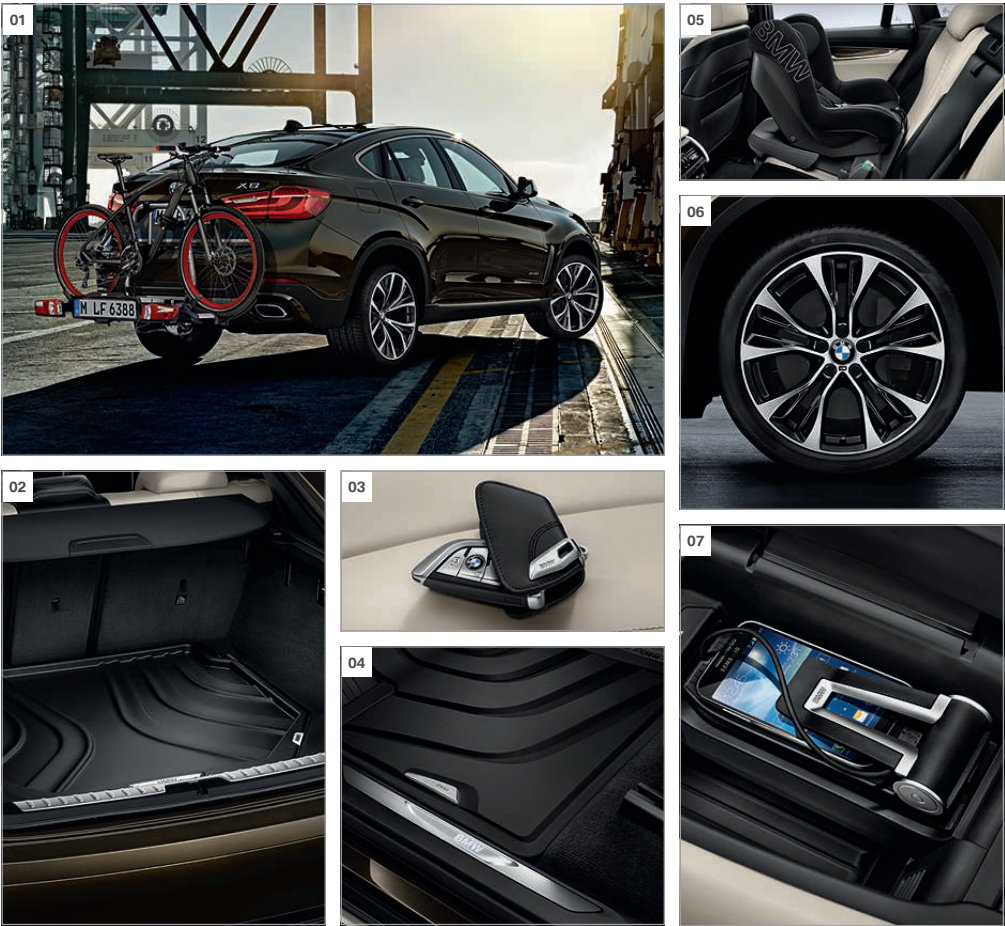
**[ 05 ]** 19" Streamline style 490 light alloy wheels, 9J x 19 with 255/50 R19 run-flat tyres.

**[ 06 ]** 20" BMW individual V-spoke style 551 light alloy wheels, with mixed run-flat tyres, front 10J x 20 with 275/40 R20 tyres, rear 11J x 20 with 315/35 R20 tyres.
- [ 07 ]** 20" V-spoke style 597 light alloy wheels, with mixed run-flat tyres, front 10J x 20 with 275/40 R20 tyres, rear 11J x 20 with 315/35 R20 tyres.

**[ 08 ]** 20" M Double-spoke style 468 M light alloy wheels, with mixed run-flat tyres, front 10J x 20 with 275/40 R20 tyres, rear 11J x 20 with 315/35 R20 tyres. (Standard with M50d).

**[ 09 ]** 20" M Double-spoke style 469 M light alloy wheels, with run-flat tyres, front 10J x 20 with 275/40 R20 tyres, rear 11J x 20 with 315/35 R20 tyres. (Standard with M Sport models).

GENUINE BMW ACCESSORIES.



- [ 01 ]** Bicycle holder for transporting up to two bikes (max. 60kg). Securely mounts to the trailer tow hitch. Tilting function for easy access to the luggage compartment.

**[ 02 ]** The impressive non-slip luggage mat is hard wearing and perfectly fitted.

**[ 03 ]** The premium quality black leather case with a stylish stainless steel clasp prevents the buttons from being accidentally pressed and protects the key against scratches and dirt.
- [ 04 ]** The perfectly fitted, durable mat with a raised border and stainless steel metal inlay protects the footwell and feet from moisture and dirt.

**[ 05 ]** BMW junior seat, group 1. Seat, Black/Anthracite, for children from approx. 12 months to 4 years old (approx. 9–18kg), for mounting on the ISOFIX base (to be ordered separately). Includes air pads for more side impact protection.
- [ 06 ]** 21" BMW M Performance light alloy in Double-spoke style 599 M, bi-colour matt Orbit Grey, gloss-lathed on the visible side, with a rolled-steel rim bed and M designation. RDC complete wheel set with run-flat mixed tyres.

**[ 07 ]** Connect Universal snap-in adapter. An adapter for all compatible telephones with a micro USB port. In addition to charging, it improves reception and allows for safe storage.



EXTERIOR COLOURS.

■ Standard equipment    □ Optional equipment



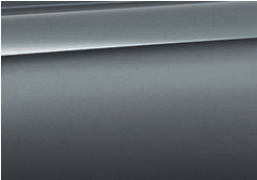
■ Non-metallic 300 Alpine White



■ Non-metallic 668 Jet Black¹



□ Metallic 416 Carbon Black²



□ Metallic A52 Space Grey



□ Metallic 475 Black Sapphire



□ Metallic A83 Glacier Silver¹



□ Xirallic C06 Flamenco Red



□ Xirallic C07 Sparkling Storm¹



□ Metallic A14 Mineral Silver¹



□ Metallic A96 Mineral White



□ Xirallic A90 Sophisto Grey¹

BMW INDIVIDUAL



□ BMW Individual X01 Pearl Silver metallic



□ BMW Individual X03 Ruby Black metallic



□ BMW Individual X13 Pyrite Brown metallic



□ BMW Individual S34 Azurite Black metallic



THE BMW X6 IN YOUR FAVOURITE COLOUR.  
TAKE A DIGITAL TOUR TODAY.

¹ Not available for M Sport models.  
² Only available for M Sport models.

[ Colour samples ] These colour samples are intended as an initial guide to the colours and materials available for your BMW. However, experience has shown that printed versions of paint, upholstery and interior trim colours cannot in all cases faithfully reproduce the appearance of the original colour. Please discuss your preferred colour choices with your BMW Retailer. There you can also see original samples and be assisted with any requests.



INTERIOR COLOURS.

■ Standard equipment    □ Optional equipment

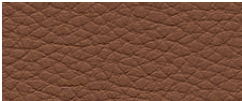
UPHOLSTERY COLOURS



■ **LCSW Black**  
Dakota leather<sup>1</sup>



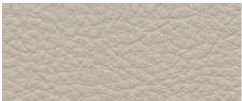
■ **LCCY Canberra Beige**  
Dakota leather<sup>1</sup>



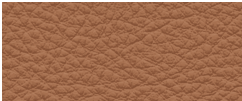
■ **LCB8 Terra**  
Dakota leather<sup>1</sup>



■ **LCD1 Coral Red**  
Dakota leather<sup>2</sup>



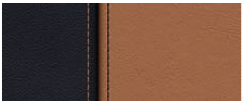
■ **LCEW Ivory White**  
Dakota leather<sup>3</sup>



■ **LCRI Cognac**  
Dakota leather<sup>3</sup>



□ **NAEN Bi-colour Ivory White/Black**  
Exclusive Nappa leather<sup>1, 4</sup>

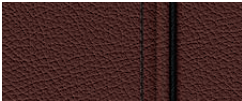


□ **NARQ Bi-colour Cognac/Black**  
Exclusive Nappa leather<sup>1, 4</sup>

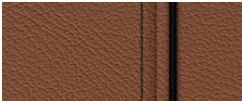


□ **GMAT Black**  
Alcantara/Dakota leather<sup>2, 3, 5</sup>

BMW INDIVIDUAL UPHOLSTERY COLOURS



□ **ZAP3 Criollo Brown**  
BMW Individual Extended Merino leather<sup>6</sup>



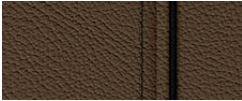
□ **ZAP5 Amaro Brown**  
BMW Individual Extended Merino leather<sup>6</sup>



□ **ZAFU Smoke White**  
BMW Individual Extended Merino leather<sup>6</sup>



□ **ZAN3 Taupe**  
BMW Individual Extended Merino leather<sup>6</sup>



□ **ZAML Nutmeg**  
BMW Individual Extended Merino leather<sup>6</sup>

Please note that even normal long or short-term use can lead to unrecoverable upholstery damage. This can be caused in particular by non-colourfast clothing.  
<sup>1</sup> In conjunction with the optional Seat ventilation, front, Dakota leather comes with perforated surfaces on the front seats, while Exclusive Nappa leather and BMW Individual Extended Merino leather comes with perforated surfaces on the front and rear seats.

<sup>2</sup> Not available in conjunction with standard seats.  
<sup>3</sup> Not available in conjunction with Comfort seats.  
<sup>4</sup> Exclusively available with Pure Extravagance Interior Design package in combination with Comfort seats.  
<sup>5</sup> Only available in conjunction with M Sport/MSD.

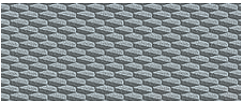
INTERIOR TRIMS



□ **4B9 Fine Brushed Aluminium**



□ **BMW Individual XE7 Piano Black**



□ **4MR Aluminium Hexagon<sup>9</sup>**



□ **BMW Individual XEW Light Sen wood, High-gloss**



□ **4CV American Oak, High-gloss<sup>7</sup>**



□ **4D0 Fine Line Stripe, High-gloss<sup>8</sup>**



□ **4AC Poplar Grain wood, High-gloss**



□ **BMW Individual 4WC Ash Volcano Brown, High-gloss**



□ **4DD Fine Line Pure textured wood**

INTERIOR COLOURS



Black



Canberra Beige

HEADLININGS



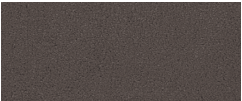
□ **775 Anthracite**



□ **776 Alcantara Anthracite**



□ **BMW Individual XD5 Alcantara Smoke White<sup>9</sup>**



□ **BMW Individual XD5 Alcantara Dark Scotch<sup>10</sup>**

<sup>6</sup> BMW Individual Extended Merino leather includes the front and rear seats, including headrests, rear panels on the front seat backrests, door panel inserts and centre console, including armrest, armrests in the doors and the door handles. Seats with contrast piping, contrast stitching and decorative perforation (decorative perforation not available in conjunction with optional Seat ventilation, front).  
<sup>7</sup> Standard with Pure Extravagance Interior Design package Ivory White/Black.

<sup>8</sup> Standard with Pure Extravagance Interior Design package Cognac/Black.  
<sup>9</sup> Only available in conjunction with BMW Individual Extended Merino leather in Amaro Brown, Criollo Brown or Smoke White.  
<sup>10</sup> Only available in conjunction with BMW Individual Extended Merino leather in Taupe or Nutmeg.



		X6 xDrive50i	X6 xDrive30d	X6 xDrive40d	X6 M50d

Weight					
Unladen weight EU¹	kg	2245	2140	2180	2260
Max. permissible	kg	2885	2780	2820	2900
Permitted load	kg	715	715	715	715
Permitted axle load, front/rear	kg	1385/1570	1330/1540	1350/1550	1400/1570
Permitted roof load	kg	100	100	100	100
Permitted trailer load, unbraked	kg	750	750	750	750
Permitted trailer load, braked, max. 12% gradient	kg	3500	3500	3500	3500
Permitted trailer load, braked, max. 8% gradient	kg	3500	3500	3500	3500

Engine² ³					
Cylinders/valves		8/4	6/4	6/4	6/4
Capacity	cc	4395	2993	2993	2993
Max. output/engine speed	kW/rpm	330/ 5500–6000	190/ 4000	230/ 4400	280/ 4000–4400
	hp/rpm	449/ 5500–6000	258/ 4000	313/ 4400	381/ 4000–4400
Max. torque/engine speed	Nm/rpm	650/ 2000–4500	560/ 1500–3000	630/ 1500–2500	740/ 2000–3000

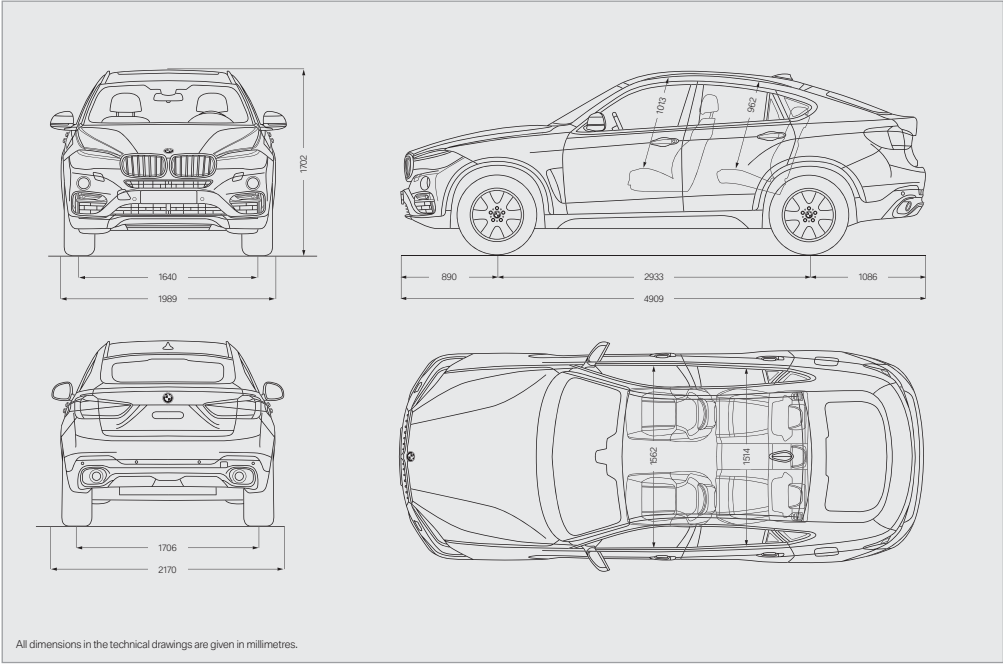
Transmission					
Standard transmission ratio	I/II/III:1	5.0/3.2/2.14	5.0/3.2/2.14	5.0/3.2/2.14	5.0/3.2/2.14
	IV/V/VI:1	1.72/1.31/1.0	1.72/1.31/1.0	1.72/1.31/1.0	1.72/1.31/1.0
	VII/VIII/R:1	0.82/0.64/3.48	0.82/0.64/3.48	0.82/0.64/3.48	0.82/0.64/3.48
Axle transmission ratio	:1	3.15	3.15	3.15	3.15

Performance					
Top speed	mph (km/h)	155 (250)⁴	143 (230)	149 (240)	155 (250)⁴
Acceleration 0–62mph	s	4.8	6.7	5.8	5.2

Fuel consumption²,³					
Urban	mpg (l/100km)	21.6–21.7 (13.0–13.1)	41.5–42.2 (6.7–6.8)	39.8–40.4 (7.0–7.1)	39.2 (7.2)
Extra-urban	mpg (l/100km)	36.2–36.7 (7.7–7.8)	50.4–51.4 (5.5–5.6)	48.7–49.6 (5.7–5.8)	44.8 (6.3)
Combined	mpg (l/100km)	29.1 (9.7)	47.1 (6.0)	44.8–45.6 (6.2–6.3)	42.8 (6.6)
CO₂ emissions	g/km	225–227	157–159	163–165	174

Wheels					
Tyre dimensions front/rear		255/50 R19 W	255/50 R19 W	255/50 R19 W	275/40/315/35 R20 W
Wheel dimensions front/rear		9J x 19	9J x 19	9J x 19	10/11J x 19
Material		Light alloy	Light alloy	Light alloy	Light alloy

Electrical system					
Battery capacity	Ah	90 + 50	105	90	105
Alternator output	A	210	220	220	220
	W	2940	3080	3080	3080



Luggage compartment capacity 580 to 1,525 litres.

<sup>1</sup> The figure quoted includes a 90% full tank, 68kg for the driver and 7kg for luggage. Unladen weight applies to vehicles with standard equipment. Optional equipment will increase this figure.

<sup>2</sup> BMW recommends the use of 95 RON super unleaded petrol. Unleaded fuels 91 RON and higher with a maximum ethanol content of 10% (E10) may also be used. Output and fuel consumption figures apply to 98 RON fuel. The BMW X6 M50d is designed for use with sulphur-free diesel petrol.

<sup>3</sup> All engines comply with the EU6 emissions standard. Fuel consumption is determined in accordance with the ECE driving cycle (93/116/EU) which consists of approximately one-third urban traffic and two-thirds extra-urban driving (based on the distance covered). CO₂ emissions are measured in addition to fuel consumption. Optional equipment may increase these figures. For further information about fuel consumption and CO₂ emissions, please consult your BMW Retailer.

<sup>4</sup> Electronically limited.



# THE BMW SERVICE CONCEPT:

When you buy a BMW, you can look forward to superb service and comprehensive customer care. **Condition Based Service** tracks service fluids and parts subject to wear, and where appropriate indicates required service stops on the display. In combination with **BMW TeleServices**, the vehicle data collected by Condition Based Service are automatically transmitted to BMW. Your preferred **BMW Service Retailer**

## BMW SERVICE INCLUSIVE.



**BMW Service Inclusive:** Wouldn't it be good to know your comprehensive servicing costs in advance? Well, that's exactly what BMW Service Inclusive<sup>1</sup> provides and for a low one-off payment.

BMW Service Inclusive<sup>1</sup> lasts for 5 years or 50,000 miles (whichever occurs first) and covers all your vehicle's comprehensive servicing requirements. Alternatively you can choose BMW Service Inclusive Plus<sup>2</sup>, which in addition to servicing also covers maintenance items such as brake pads, brake discs and windscreen wipers. And whenever

servicing and maintenance work is carried out on your BMW, you can be sure that it will only be done by fully qualified BMW Service Approved Technicians at one of over 150 BMW Service Authorised Workshops around the country. Furthermore, only Genuine BMW Parts are used – each covered by a two year warranty. BMW Service Inclusive and Service Inclusive Plus are transferable to subsequent owners within the time and mileage period, which can enhance the resale value of your car.<sup>2</sup>  
[www.bmw.co.uk/serviceinclusive](http://www.bmw.co.uk/serviceinclusive)

## BMW EMERGENCY SERVICE.



**BMW Emergency Service.** BMW Emergency Service is the only roadside and assistance programme designed specifically for BMW vehicles offering an exceptional range of benefits and services. It is available 24 hours a day, 7 days a week and utilises a dedicated fleet of BMW Approved Technicians, equipped with Genuine Parts and tools, ensuring that you and your vehicle receive the best possible care in the event of any motoring emergency.

This tailor-made programme has been specifically designed to meet the needs of BMW drivers travelling in the UK, Republic of Ireland and Continental Europe giving complete reassurance and peace of mind. Every new BMW is covered for three years.

## THE BMW EXPERIENCE.



**BMW News:** To ensure you're one of the first to hear the latest BMW news and developments, BMW UK offer an email programme. Sign-up at: [www.bmw.co.uk/newsletter](http://www.bmw.co.uk/newsletter)



**BMW World, an iconic building in the Munich skyline.** The BMW World is a true brand experience where it's possible to marvel at the historic BMWs in the museum, learn about our engineers' newest innovations and take a tour of the plant to experience with your own eyes the cutting-edge and exacting methods used to create a BMW.



**BMW Magazine:** Every new BMW customer receives a complimentary subscription to BMW Magazine. This publication features all the latest news and developments from BMW, together with a variety of driving and lifestyle features.

can access the vehicle data. They will contact you when necessary to arrange a service appointment where the required repairs can be performed, using **Genuine BMW Parts**, so your driving pleasure can continue indefinitely. Worldwide, you can call on more than **3,300 Service Authorised Workshops** in more than **150 countries**.

## BMW CONNECTED DRIVE SERVICES.



**BMW ConnectedDrive Services.** A function using the built-in BMW SIM card to provide telematic and online services that are fully integrated into your BMW vehicle. All services require connection to a UK mobile network. Some services are available in other European countries. The range of ConnectedDrive Services that are available depends on the specification of the vehicle. The service duration varies depending on the ConnectedDrive Service.

For further information on BMW ConnectedDrive Services and terms and conditions please visit [www.bmw.co.uk/connecteddrive-information](http://www.bmw.co.uk/connecteddrive-information)

## BMW FINANCIAL SERVICES.



**BMW Financial Services:** BMW Financial Services offers a range of solutions designed to help you drive the BMW of your choice. All our products offer you the flexibility to customise your finance, making driving away a BMW a reality. After all, who knows more about financing your BMW than BMW.

If you would like more information, visit [www.bmwfs.co.uk](http://www.bmwfs.co.uk). Here, you will also find details of our comprehensive range of products engineered for every eventuality.

You can view all of our current offers at the touch of a button using the BMW Financial Services Offers App. Download it now for free.



Finance is subject to status and available to over 18's in the UK only (not the Channel Islands or the Isle of Man). Guarantees and indemnities may be required. Advertised finance is provided by BMW Financial Services, Bartley Way, Hook, Hampshire RG27 9UF.

<sup>1</sup> Service Inclusive and Service Inclusive Plus are available as cost options. Terms and conditions apply, for full details speak to your retailer or visit [www.bmw.co.uk/serviceinclusive](http://www.bmw.co.uk/serviceinclusive)  
<sup>2</sup> For further information, please contact your local BMW Retailer.

# SHAPING THE FUTURE – RESPONSIBLY.



In 2014, the BMW Group was once again listed in the Dow Jones Sustainability World and Europe Indices and thus ranked one of the most sustainable automotive companies worldwide. The development of efficient vehicle concepts and eco-friendly production processes, up to and including recycling, is an integral part of our engineering philosophy. Thanks to BMW EfficientDynamics, the CO<sub>2</sub> emissions of our European new-vehicle fleet have dropped by more than 30% since 1995. Over the period from 2006 to 2020 we are also aiming to achieve a 45% reduction in the amount of resources – such as water and energy – that our manufacturing operations consume. Since 2007, production in our engine plant in Steyr, Austria, has generated zero waste water. And of course each of our vehicles is designed for easy and economical recycling after its long running life. Please contact your BMW Centre on all matters regarding your end-of-life vehicle. For further information please visit our website.

[www.bmw.co.uk/EfficientDynamics](http://www.bmw.co.uk/EfficientDynamics)  
[www.bmwgroup.com/responsibility](http://www.bmwgroup.com/responsibility)  
[www.bmw.com/recycling](http://www.bmw.com/recycling)



More about BMW

[www.bmw.co.uk](http://www.bmw.co.uk)  
[www.bmw.ie](http://www.bmw.ie)



The Ultimate  
Driving Machine



The models illustrated in this brochure show the specifications of vehicles produced by BMW AG for the German market. In part, they include optional equipment and accessories not fitted as standard. According to the specific requirements of the markets of other European Union member states, alterations in models, standard and optional equipment, as described in this brochure, may occur. For information about country-specific vehicle versions, please contact your local BMW Centre. The images and product descriptions are subject to changes in specific details. Part number 95 38 0 003 033. August 2015.

© BMW AG, Munich/Germany. Not to be reproduced wholly or in part without written permission of BMW AG, Munich.

4 11 006 262 21 2 2015 BB. Printed in Germany 2015.

